

TIME WARNER CENTER

Teamwork Assembles an Opulent Array of Ornamental Details

OPPOSITE: ©BERNSTEIN ASSOCIATES, PHOTOGRAPHERS / RAY JACKSON; RIGHT: ©DAVID SUNDBERG / ESTO



OPPOSITE The main entrance is framed by a 150-foot high cable net curtain wall.

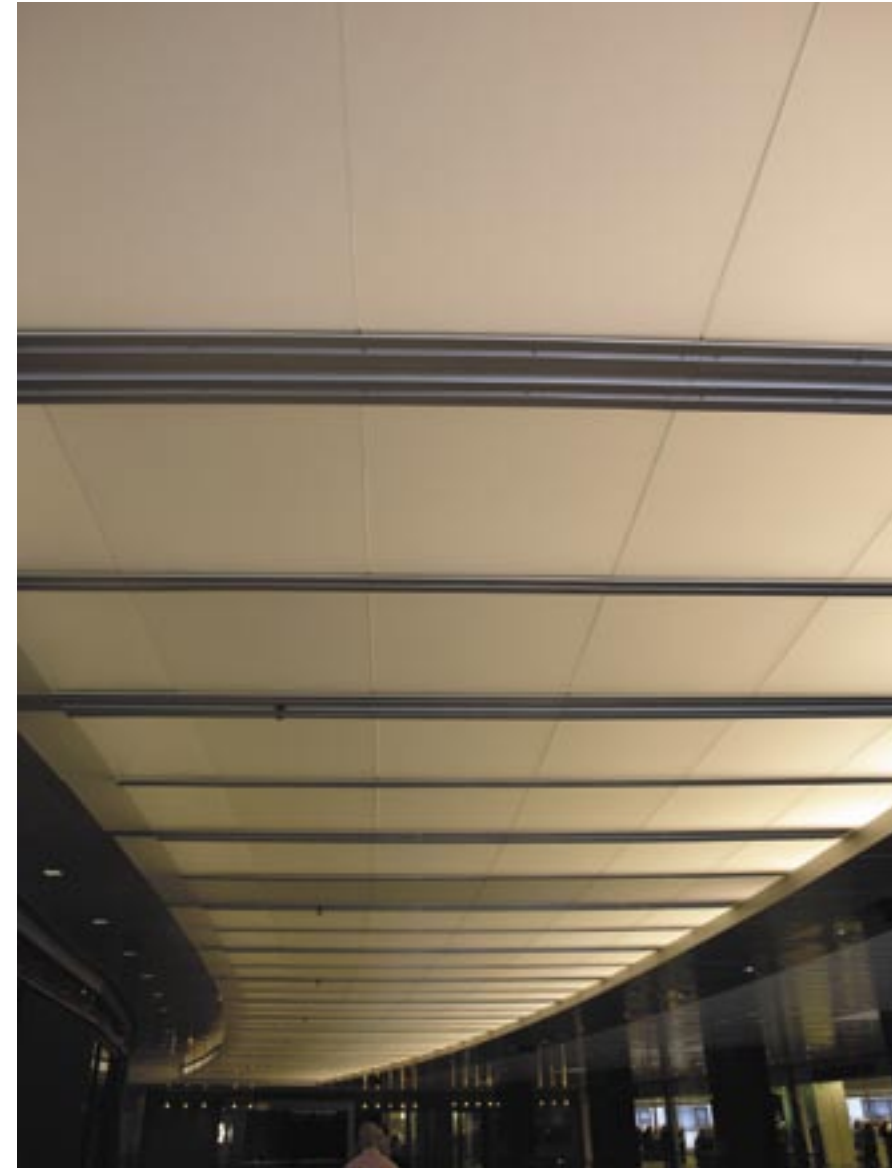
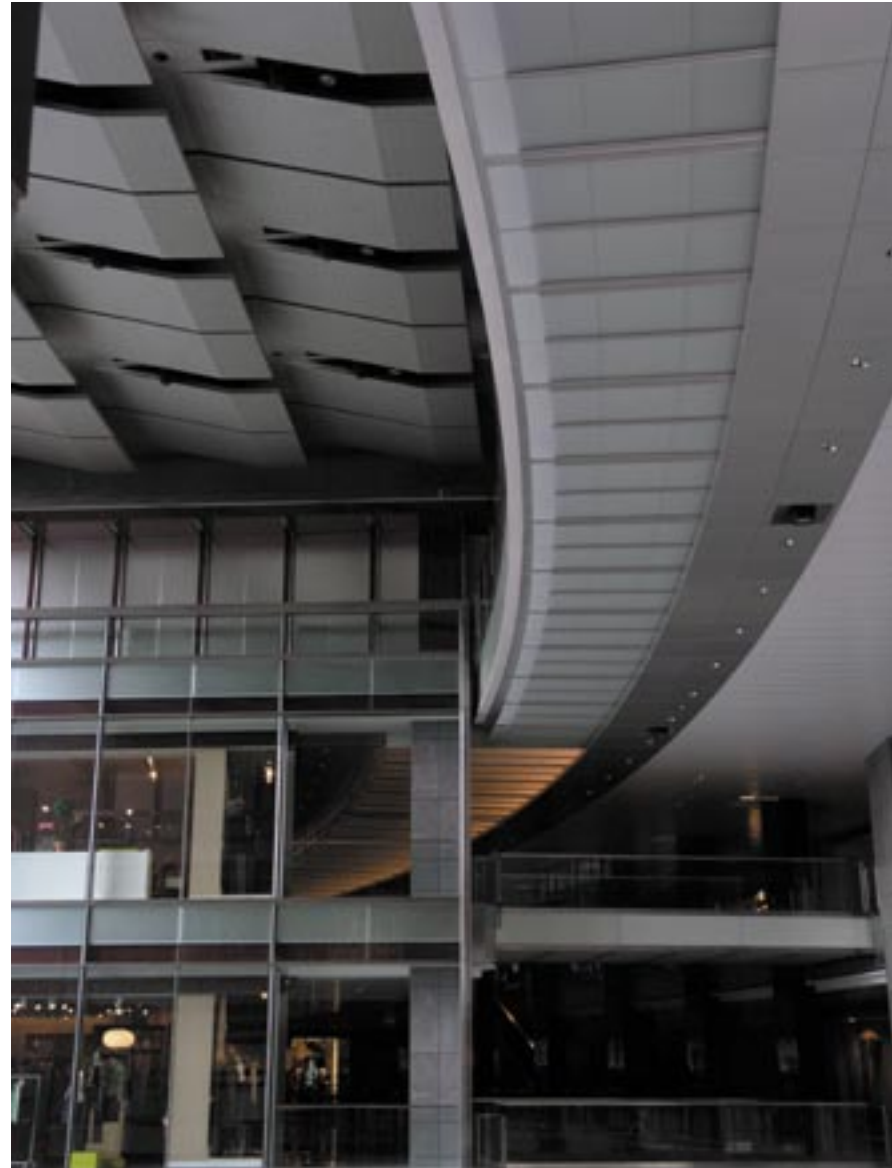
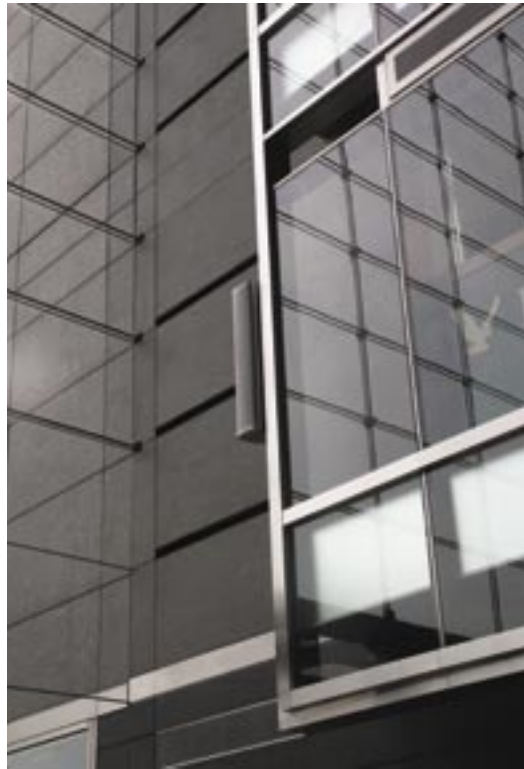
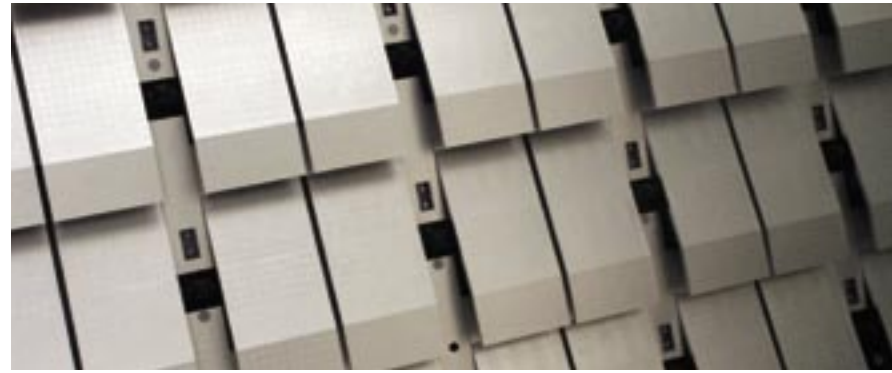
ABOVE The facade hugs Columbus Circle in plan.

The new Time Warner Center is big—it has 2.7 million square feet of space—but with nearly 1,000,000 square feet of ornamental metal, 13,000 panes of glass, and 12 types of curtain wall in its exterior facade, as well as extensive and elaborate ornamental interior detailing, its success as Columbus Circle's new hub also comes down to the finesse of hundreds upon hundreds of small details. Many of these details are the triumph of the complex steel construction that holds the building together both physically and aesthetically. "Steel is both the structural and ornamental anchor of the building," explains Ana Bertuna, Assistant Vice President of the Related Companies, Inc., which owns the center.

The building, which gathered major investors and comprises a record number of residential condos, restaurants, and top-of-the-line retail space in one enclosure, was constructed in less than two years. Building a structure of this size in that timeframe required four major subcontractors working together detailing steel on both the interior and the exterior of the first five stories. A major feat of coordination, the project brought together and now showcases the work of many of New York's top ornamental metalworking companies.

Each contractor had a complex task. The most striking is the installation of a 150-foot-high cable net curtain wall framing the building's main entrance onto Columbus Circle. The largest of its type in the country, the curtain wall is supported at the top by a 35-ton, 90-foot-long truss and an equally large girder from Littell Steel in New Brighton, PA. The cable net, which was custom-made in Belgium, is a web of vertical and horizontal stretched steel cables, affixed with Type 316 stainless steel nodes. Loaded between the nodes are glazing panels constructed of two layers of 3/8-inch-thick, heat strengthened Viracon glass that have been laminated together. As the cables move, the glass wall can deflect up to 22 inches. "It's rare that a building would have this size of entryway," says Jerry Haber, president of W&W Glass Systems of Nanuet, NY, which installed the wall. "It's a large entrance for a large atrium."

On the exterior, canopies fabricated of stainless steel-clad structural steel mark entries to the Mandarin Hotel, Jazz at Lincoln Center, residential and office entryways, and the 58th Street and 60th entrances. Along the building's exterior, the canopies' fabricator—Coordinated Metals of Carlstadt, NJ—fashioned and installed 16 gauge, No. 4 finished stainless steel contours to act as break-points between the storefronts and the rest of the building. The company was also in charge of the tricky task of covering exposed



TOP LEFT Stainless steel nodes on the curtain wall

TOP RIGHT Atrium ceiling panels

BOTTOM LEFT Stainless steel work framing shop windows

BOTTOM RIGHT The ceiling curves with the building's geometry.

ALL PHOTOS ©2005 NICHOLAS GOLDBERG

TOP LEFT Stainless steel panels in service areas

TOP RIGHT Welded corner on stainless steel hand rail

BOTTOM LEFT Back-lit frosted glass panels on the curving roof

BOTTOM RIGHT Revolving doors at the building's 60th Street entrance



OPPOSITE The main entrance canopy seamlessly joins the interior stainless steel work.

A major feat of coordination, [Time Warner Center] brought together and showcases the work of many of New York's top ornamental metalworking companies.

©2005 NICHOLAS GOLDBERG

structural beams with stainless steel cladding, and with installing the curved entries to the building's subways. "Because of the odd geometry of the building, lining up the survey marks, getting the steel to meet the stone, and getting all the panels to fit was an extra challenge," says Paul Santo, Project Manger for Coordinated Metals.

The steel detailing from the exterior continues inside the Galleria. Subcontractor Melto Metals installed a curved ceiling, actually formed from ornamental curtain wall elements, made of anodized aluminum framing hung with frosted glass panels. The ceiling follows the internal geometry of the atrium. Inside the 58th and 60th Street entrances, 16 gauge Type 316 stainless steel panels, with a hand-rubbed, No. 6 finish climb five stories. Neutral piers, clad in the same stainless steel and wood, act as boundaries between storefronts.

For the five-story atrium, American Architectural, Inc. fabricated three tiers, holding approximately 2,000 feet of custom stainless steel railings, complete with custom stainless steel posts, brackets, and laser-cut plates, to attach to panels of custom laminated etched glass. In the lobby, steel panels enclose the side and underside of the escalators. On the north and south sides of the Galleria, bridges formed of aluminum gridwork with stainless steel trim are set with pavers of 1 1/2-inch-thick laminated custom glass. "This was one of the first uses of this glass, and it's in keeping with the project, which took every nice product and technology on the market and just put it in the building," says Tom Darigo, of American Architectural.

Ana Bertuna says she's delighted with the result: This steel is for show, but the show accents and highlights the complexity of the structure around it. "It's really stunning," says Bertuna. "You really feel the outside coming in." ■

TIME WARNER CENTER

Owner **The Related Companies, Inc.** *New York, NY*
 Architect **Skidmore, Owings & Merrill** *New York, NY*
 Engineer **WSP Cantor Seinuk** *New York, NY*
 General Contractor **Bovis Lend Lease, LMB** *New York, NY*
 Miscellaneous Steel Fabricators and Erectors
Skyline Steel Corp. *Brooklyn, NY*
Coordinated Metals, Inc. *Carlstadt, NJ*
Empire City Iron Works *Long Island City, NY*
 Miscellaneous Steel Fabricators and Erectors
Melto Metals *Freeport, Long Island*
Gold Coin Ironworks *Elmsford, NY*
 Curtain Wall Erector
Diamond Installation *New Rochelle, NY*
W & W Glass *Nanuet, NY*
 Metal Deck Erector **Solera/DCM Erectors, Inc.** *New York, NY*